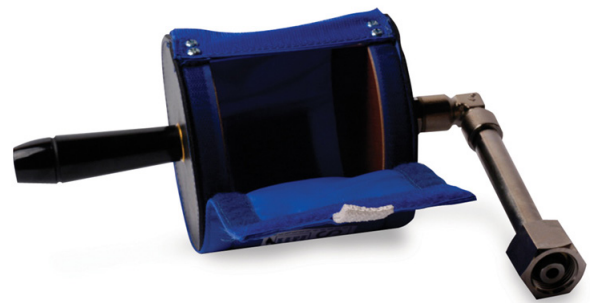


# Dry Ice Makers

Dry ice/liquid mixtures can produce temperatures down to  $-78\text{ }^{\circ}\text{C}$ . The latent heat of vaporization of dry ice is  $572\text{ kJ/kg}$  ( $246\text{ BTU per lb}$ ).

Seta dry ice makers are a safe, efficient and convenient method of producing pellets and blocks in a range of sizes.



> 70200-0 & 70210-0

Specifications:			
Part Number:	70200-0	70210-0	70220-3
Part Name:	Snowpack Dry Ice Maker	Snowpack Major Dry Ice Maker	Portable Dry Ice Maker
Pellet/Block Size (approx):	30 g	500 g	1 kg
Injection Time (approx):	1 minute	2½ minutes	1 minute
Size (HxWxD):	27 x 15 x 9 cm	28 x 15 x 15 cm	23 x 15 x 12 cm
Weight:	0.6 kg	0.8 kg	3.3 kg